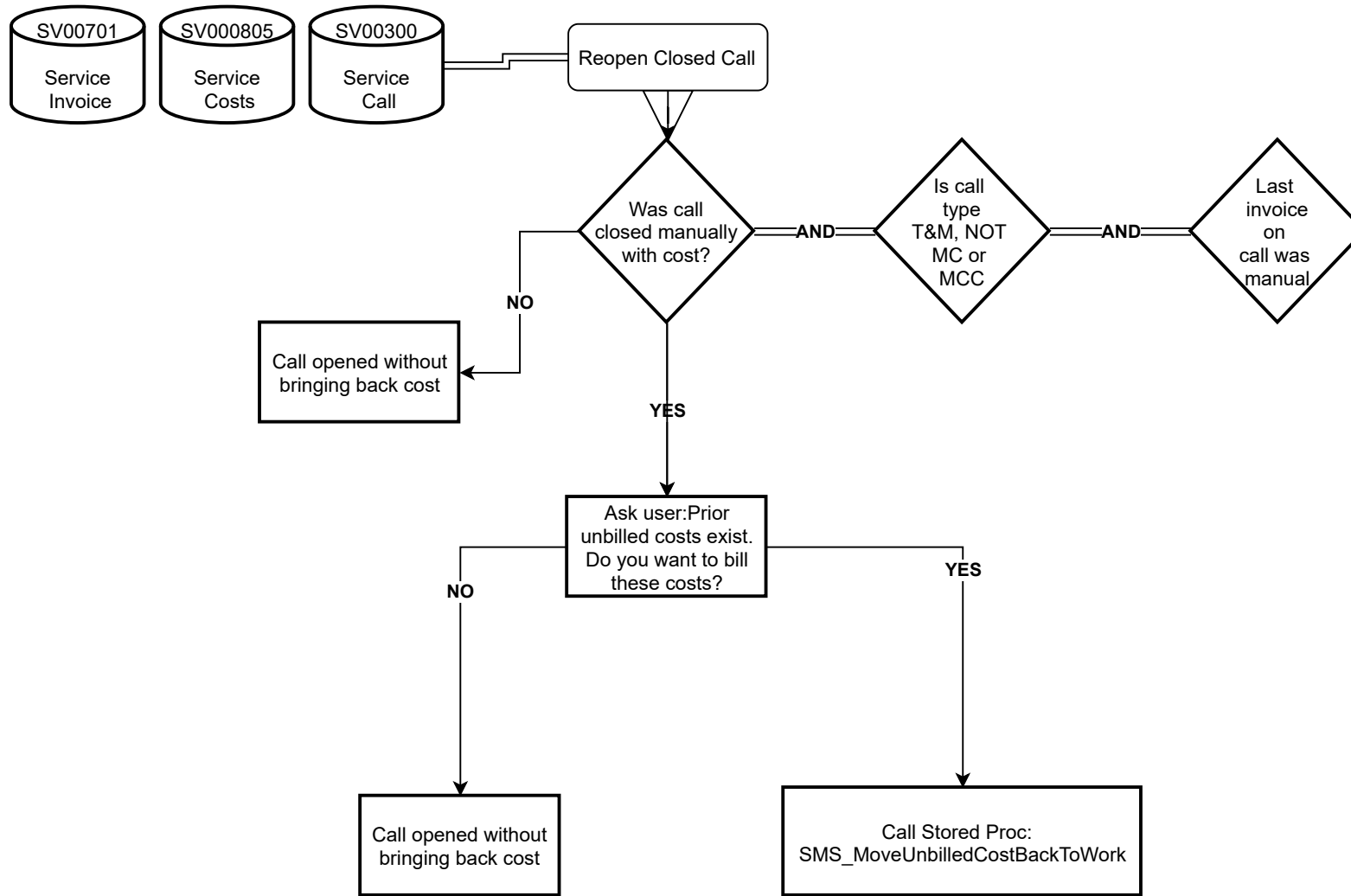


# Signature Service Call Reopen



**SMS\_MoveUnbilledCostBackToWork**  
**Parameters:**

- 1. Service Call ID INPUT**
- 2. Call Invoice Number INPUT**
- 3. Error String OUTPUT**

All queries are focus on one call and invoice number

Insert from  
SV000815 to  
SV000810

WHERE: RMDTYPAL = 8 and Added Rate = 0

Delete from  
SV000815

WHERE: RMDTYPAL = 8 and Added Rate = 0

Delete from  
SV00701

WHERE: Call ID and Inv # matches INPUT

Update SV00300  
SET Added\_Rate = 0

Recalculate billing on  
each transaction copied  
back to OPEN

SQL Proc: SMS\_CalculateTrxBillingAmount



Only attempt to calculate billable overhead if using Extended Pricing

SQL Proc: SMS\_EPMatrix\_Billable\_Overhead