

# Signature

## Equipment Management Installation and Upgrade Guide

# Legal Declarations

## Copyright

Copyright © 2023 WennSoft, Inc. All rights reserved.

Your right to copy this documentation is limited by copyright law and the terms of the software license agreement. As the software licensee, you may make a reasonable number of copies or printouts for your own use. Making unauthorized copies, adaptations, compilations, or derivative works for commercial distribution is prohibited and constitutes a punishable violation of the law.

Portions of this manual are taken from materials and products by Microsoft Dynamics GP. Copyright 2023 by Microsoft. Reprinted by permission of Microsoft. Unless otherwise noted, all names of companies, products, street addresses, and persons contained herein are fictitious and are used solely to document the use of this product.

## Trademarks

All company or product names mentioned are trademarks or registered trademarks of WennSoft, Microsoft, or of their respective holders.

## Warranty

WennSoft disclaims any warranty regarding the program, documentation, or sample code contained in this document, including the warranties of merchantability and fitness for a particular purpose.

## Limitation of Liability

The information contained within this manual, if modified by a Partner or Customer, from the original version delivered by WennSoft, shall indemnify and release WennSoft from any loss, damage, or error resulting from the use of this modified documentation. The resulting content of this manual is furnished for informational use only, is subject to change without notice, and should not be construed as a commitment by WennSoft. WennSoft assumes no responsibility or liability for any errors or inaccuracies that may appear in this manual. Neither WennSoft nor anyone else who has been involved in the creation, production, or delivery of this documentation shall be liable for any indirect, incidental, special, exemplary, or consequential damages, including but not limited to any loss of anticipated profit or benefits, resulting from the use of this documentation or sample code.

## License Agreement

Use of this product is covered by a license agreement provided by WennSoft, with the software product. If you have any questions, please call WennSoft Sales at 262-821-4100.

# Table of Contents

<b>Installing Equipment Management .....</b>	<b>1</b>
Step 1: Run the installation wizard .....	1
Step 2: Enable Signature registration keys.....	1
Step 3: Include new code.....	1
Step 4: Install server and company objects .....	1
<b>Upgrading Equipment Management .....</b>	<b>2</b>
Step 1: Run the installation wizard .....	2
Step 2: Enable Signature registration keys.....	2
Step 3: Include new code.....	2
Step 4: Run the upgrade wizard .....	2
<b>Signature Equipment SSRS Reports Setup .....</b>	<b>3</b>
System requirements.....	3
Before you begin .....	3
Step 1: Install SQL Server Reporting Services.....	3
Step 2: Define the location of SSRS reports server and Report Manager.....	3
Setting up Signature Reports .....	4
Step 1: Deploy Signature SSRS reports.....	4
Step 2: Set up company logo (optional) .....	5
Step 3: Set up Signature SRS reports to print from GP .....	6
<b>Installing Product Registration Keys.....</b>	<b>8</b>
System Requirements.....	8
Installing the Registration Software .....	8
Enabling Registration Keys.....	9
About Registration Key Tables .....	9
<b>Technical Notes and Troubleshooting.....</b>	<b>9</b>
Technical notes .....	10
About registration key tables .....	10
About WS SQL database users.....	10
Troubleshooting.....	10
Viewing errors in the Web Service Event Viewer.....	10
Is the SignatureRegistration web service installed and working correctly? .....	10

Are the registration keys registered? .....11

Does the web service location match IIS?.....11

**Contact Information ..... 13**



# Installing Equipment Management

Use the following instructions to install Equipment Management on a Microsoft SQL Server or client machine. If you are installing on a server, there are additional tasks that need to be performed after the installation.

## Step 1: Run the installation wizard


1. Launch the file **Equipment Management.exe**.
2. On the Welcome screen, select *Next* >.
3. Accept the terms of the license agreement, and select *Next* >.
4. Accept the default installation location, or use the *Browse...* button to navigate to the location where Microsoft Dynamics GP is installed. Select *Next* >.
5. When you are ready to begin the installation, select *Install*.
6. When the installation is complete, select *Finish*.

## Step 2: Enable Signature registration keys

Follow the steps in [Installing Product Registration Keys \(page 8\)](#) to register your Signature products, then proceed with Step 3 below.

## Step 3: Include new code

1. Launch Microsoft Dynamics GP.
2. Select *Yes* to the message asking if you wish to include new code. A message appears stating that EQUIPMNT.CNK is being included. The old Equipment Management dictionary will be renamed and saved as EQUIPMNT\_OLD.DIC.

 If a progress bar does not appear, verify that the EQUIPMNT.CNK file was saved in the same directory as the DYNAMICS.DIC file.


3. Enter "DYNSA" or "sa" for the user ID. You need to log in as the administrator to complete the server installation.

## Step 4: Install server and company objects

1. After logging in to Equipment Management as "sa," the Installation Wizard appears. On the Welcome screen, select *Next* >.
2. On the Select Companies screen, mark the companies you want to install. If the sample company is selected, you can load sample data by marking the **Load Sample Data** checkbox. To load sample data, you must be logged in to the sample company, Fabrikam, Inc. The **Install System Objects** checkbox will be marked and disabled. Select *Next* >.
3. Review the installation information, and select *Finish*. A series of progress windows appear. You are notified when the installation is complete.
4. Select *OK*.

# Upgrading Equipment Management

After running the installation wizard to upgrade Equipment Management, the upgrade wizard automatically opens if the system or company needs upgrading. If you have more than one company, you must run the upgrade wizard for each company.

 **IMPORTANT:** If you are using Signature products, the Signature dictionary must be upgraded before you upgrade Equipment Management.

## Step 1: Run the installation wizard


1. Launch **Equipment Management.exe**.
2. On the Welcome screen, select *Next* >.
3. Accept the terms of the license agreement, and select *Next* >.
4. Accept the default installation location, or use the *Browse...* button to navigate to the location where Microsoft Dynamics GP is installed. Select *Next* >.
5. When you are ready to begin the installation, select *Install*. When the installation is complete, select *Finish*.

## Step 2: Enable Signature registration keys

Follow the steps in [Installing Product Registration Keys \(page 8\)](#) to register your Signature products, then proceed with Step 3 below.

## Step 3: Include new code


1. Launch Microsoft Dynamics GP.
2. Select *Yes* to the message asking if you wish to include new code. A message appears stating that EQUIPMNT.CNK is being included.

 If a progress bar does not appear, verify that the EQUIPMNT.CNK file was saved in the same directory as the DYNAMICS.DIC file.


3. Enter "DYNSA" or "sa" for the user ID. You need to log in as the administrator to complete the installation.

## Step 4: Run the upgrade wizard

1. After logging in to Equipment Management as "sa", the Upgrade Wizard opens. On the Welcome screen, select *Next* >.
2. Review the upgrade information, and select *Upgrade*. A progress window appears. When the upgrade is complete, select *OK*.

 After an upgrade, you may need to update tabs. See "Setting up tabs" in the Equipment Management User Manual.

# Signature Equipment SSRS Reports Setup

 The directions below are identical to the Signature SSRS reports setup information found in the Signature Installation and Upgrade Guide and the Signature Reports Guide. This information is included for your reference.

## System requirements

To find a complete list of system requirements across all the Signature modules, refer to [Signature System Requirements](#)<sup>12</sup>.

## Before you begin

Before deploying the latest Signature reports, you must have SSRS reports set up. This setup requires the following steps:

### Step 1: Install SQL Server Reporting Services

You must download and install this to be able to use SSRS reports in Microsoft Dynamics GP and Signature.

### Step 2: Define the location of SSRS reports server and Report Manager

1. Select *Microsoft Dynamics GP > Tools > Setup > System > Reporting Tools Setup*. The Reporting Tools Setup window opens.
2. Complete the following fields on the Reporting Services tab:
  - **SQL Server Mode**  
Select *Native* mode. Signature SSRS reports do not currently support *SharePoint Integrated* mode.
  - **Report Server URL**  
This is the location of the reporting server site that hosts the web service. You specified this location when you installed SQL Server Reporting Services. Enter: [http://MyMachine/MyReportServerName](#)<sup>3</sup> where *MyMachine* is your machine name and *MyReportServerName* is the name of the report server given when you installed SQL Reporting Services. To determine the name of the report server, select *Start > All Programs > Microsoft SQL > Configuration Tools > Reporting Services Configuration*. Connect to your server and select *Web Service URL*. The **Virtual Directory** field contains the name of the report server. The instructions for finding the report manager URL may vary depending on which version of SQL Server you are running.
  - **Report Manager URL**  
Enter the Web location where the Report Manager is accessed. Enter: [http://MyMachine/MyReportsFolder](#)<sup>4</sup> where *MyMachine* is your machine name and *MyReportsFolder* is name of the virtual

<sup>1</sup> <https://wennsoft.atlassian.net/wiki/spaces/1803b05/pages/7700556/Signature+System+Requirements>

<sup>2</sup> <https://wennsoft.atlassian.net/wiki/spaces/1803b05/pages/7700556/Signature+System+Requirements>

<sup>3</sup> <http://mymachine/MyReportServerName>

<sup>4</sup> <http://mymachine/MyReportsFolder>

directory of the Report Manager. To determine the name of the report server, select *Start > All Programs > Microsoft SQL > Configuration Tools > Reporting Services Configuration*. Connect to your server and select *Report Manager URL*. The **Virtual Directory** field contains the name of the report server. The instructions for finding the report manager URL may vary depending on which version of SQL Server you are running.

3. When you are finished, select *OK* to save the Reporting Tools Setup window.

## Setting up Signature Reports

Complete the following steps to enable the use of Signature SSRS reports.

### Step 1: Deploy Signature SSRS reports

To deploy Signature SSRS reports, you must run the Signature SQL Reporting Wizard.

To ensure a clean installation and deployment of the new reports, you should have removed any existing Signature SSRS reports from both the Microsoft Dynamics GP install directory and the Report Manager. Refer to the Signature Install and Upgrade manual for more information.

Before you begin, determine the name of your SQL report server, which was set up when SQL Server Reporting Services was installed. Select *Start > All Programs > Microsoft SQL > Configuration Tools > Reporting Services Configuration*. Connect to your server and select *Web Service URL*. The **Virtual Directory** field contains the name of the report server; write down this name, as you must enter it in the steps that follow.

The instructions for finding the report manager URL may vary depending on which version of SQL Server you are running.

To start the Signature SQL Reporting Wizard, navigate to your Microsoft Dynamics GP install directory, then open the **Signature\SRS Reports** folder and launch the file **Signature.Dynamics.GP.SRSReportDeploymentWizard.exe**.

You can also run this wizard from the following locations within Microsoft Dynamics GP:

- From Service Management, select *Run Wizard* in the Service Options window.
  - From Job Cost, select *Run Wizard* in the Job Cost Setup Options window.
  - From Equipment Management, select *SRS Wizard* in the System Setup window.
  - On the Welcome screen, select *Next >*.
1. Enter the **Microsoft Dynamics GP Server** name and instance. For example, if the server name is *Fred* and the instance *Fred1*, you would enter *Fred\Fred1*.
  2. Enter your server **User Name** and **Password**, then select *Next >*.
  3. Select the company database for which to enable reports, for example, TWO. You must run the wizard multiple times if you wish to deploy SRS reports for multiple companies.
  4. Enter the **Report server URL**. This is the location of the reporting server site that hosts the web service. You specified this location when you installed SQL Server Reporting Services. Enter: <http://MyMachine/MyReportServerName><sup>5</sup> where *MyMachine* is your machine name and *MyReportServerName* is the name of the report server given when you installed SQL Reporting Services.
  5. Enter the **Dynamics/Signature Directory**. This is the directory where Microsoft Dynamics GP and Signature are installed.
  6. Select *Next >*.
  7. All SSRS report folders found in the Dynamics/Signature directory appear on the next wizard screen. Unmark the checkbox next to any folder, or expand a folder and unmark the checkbox next to any report, that you do not want to deploy.

---

<sup>5</sup> <http://mymachine/MyReportServerName>

To use KPI reports and report templates, you must be running SQL Server Reporting Services 2008 R2 or later. Additionally, you must have SQL 2008 R2 Business Intelligence Studio installed to deploy the Signature Template Pivot report template.

8. Select *Deploy*. It will take a few moments to deploy the reports. A message appears when the deployment is successful. Select *OK*. The Signature SQL Reporting Wizard starts over again. You can either deploy reports for an additional company database by choosing *Next*, or you can exit the wizard by choosing *Cancel*.

## Additional setup for Equipment Management reports

For Equipment Management, you must also set up your SSRS reports in the Report Definition Setup window (*Microsoft Dynamics GP > Tools > Setup > Equipment > System > Report Definitions*). For step-by-step instructions, refer to the Advanced Rental feature chapter of the *Equipment Management User Guide*.

## Step 2: Set up company logo (optional)

You can customize the company logo that appears on some of your customer-facing reports, for example, invoices. For each of the reports that displays a logo, the .rdl file points to the subfolder **Signature Images** and the file **Company Logo**. The default logo is a transparent image that appears on the reports as blank.



If you want your own company logo to appear on the reports, you can replace this image; however DO NOT delete the default logo unless you are replacing it. If the .rdl cannot locate **Signature Images\Company Logo**, the logo appears on the report as a missing image.



1. In Report Manager, locate the company where reports are deployed, and open the folder **Signature Images**.
2. Rename or delete the default **Company Logo** file by choosing *Show Details*, then *Edit* or *Delete*.
3. Return to the Signature Images folder and select *Upload File*. Before uploading, change the name of your new logo to **Company Logo** (no file extension), then select *OK*.

SQL Server Reporting Services  
Upload File

Home | My Subscriptions | Site Settings | Help

Search for:  Go

Upload a report or resource into WennSoft Images. To upload a report, choose a report definition (.rdl) file.

File to upload:  Browse...

Name:

☐ Overwrite item if it exists

OK Cancel

---



PLEASE REMIT TO

INVOICE

INVOICE NUMBER	SRVCE00000000136
INVOICE DATE	4/12/2007

### Step 3: Set up Signature SRS reports to print from GP

**⚠** This step is not relevant to Equipment Management.

To set up Signature SSRS reports to print from the appropriate window in the GP application, you must replace the provided Dexterity reports with the corresponding Signature SSRS reports. This requires that you either manually populate the **WSRepts** table with the pathname to the replacement report, or run the stored procedure **WS\_SetReplacementReportsForSRS**, which populates all applicable Signature SSRS report pathnames into the table.



#### About the WSRepts table

The table **WSRepts** stores the path location for replacement reports. This table is created in each company database during the Signature installation or upgrade process.

A select statement on this table yields something like the following:

```
select * from WSRepts
```

	ReportReference	ReportLocation
1	AS_Asset_Summary	
2	Error Messages	
3	JC AIA Page 1	AIA Page1.rpt
4	JC AIA Page 2	ApplicationForPayment.rpt
5	JC AP Detail Historical Aged TB	
6	JC Architect Setup	
7	JC Audit Cash Receipts	
8	JC Audit Costs	
9	JC Audit Costs PM	
10	JC Backlog	
11	JC Backlog By Period	
12	JC Backlog Sort By	
13	JC Backlog by Division	
14	JC Benefits Categories List	
15	JC CIS 23 Voucher Production	CIS23VoucherProductio...
16	JC CIS 25 Voucher Production	CIS25VoucherProductio...
17	JC CIS 4 Year End	CIS4YearEnd.rpt
18	JC CIS 5 Year End	CIS5YearEnd.rpt
19	JC CIS 6 Year End	CIS6YearEnd.rpt
20	JC CO Cost Codes	
21	JC CO Estimate Revision List	
22	JC Cash Receipts History	
23	JC Cash Receipts TRC Journal	
24	JC Certified Payroll	CertifiedPayroll.rpt

Query executed successfully.

The **ReportReference** column identifies the name of the report you want to replace, most likely a Dexterity report name.

The **ReportLocation** column stores the full path and file name of the report being referenced. This could be a local SSRS report or the URL of a remote SRS report. A blank column assumes the system is running the Dexterity version of the report. To replace the Dexterity report with the SSRS report, you must populate this column with the SSRS report location.

In the example below, an existing Dexterity report is replaced with an SSRS report using the stored procedures. UPDATE WSRepts Set ReportLocation = '[http://localhost/ReportServerNew/TWO/Signature Service/Service Cost Audit](http://localhost/ReportServerNew/TWO/Signature%20Service/Service%20Cost%20Audit)' where ReportReference = 'SV\_Service\_Cost\_Audit\_Report'

If you are replacing reports individually, you can determine the name of the Dexterity report by printing that report from within the Signature system. For SSRS reports, you also need to know the machine name on which your report server resides.

## Running the SQL stored procedure

The SQL procedure **WS\_SetReplacementReportsForSRS** globally replaces all applicable Dexterity reports with the SSRS report equivalent.


Running this procedure DOES NOT update a ReportLocation that already contains a value; it only applies to blank ReportLocation columns, which assumes that the Dexterity report is being used. If you already have a custom report specified to replace the Dexterity report, it will not be overwritten.

To replace Dexterity reports, run the following command against the *company* database to call on the stored procedure: `exec WS_SetReplacementReportsForSRS`  
The common printing DLL **Signature.ReportControl.dll** provides the WSRepts table and the two SQL procedures that can be used to set up SQL reporting. For more information on this DLL, refer to the user manual.

## Installing Product Registration Keys

Registering your product involves installing the Signature Product Registration Application, then enabling your registration keys.

If you already have the Signature Product Registration Application installed (prior to the 2016 release), you must uninstall before installing the latest version. Refer to the Readme to ensure compatibility of the registration application.

 You only need to install and enable registration keys on your server machine(s). This process does NOT need to be performed on client machines.

Before you begin, locate the registration key text file that was provided with your software. This file contains your personal product registration information. You must browse to the location of this file in Step 2.

- [System Requirements \(page 8\)](#)
- [Installing the Registration Software \(page 8\)](#)
- [Enabling Registration Keys \(page 9\)](#)
- [About Registration Key Tables \(page 9\)](#)

## System Requirements


The Microsoft Dynamics GP requirements for the following products must be met on every server machine where the Signature Product Registration Application will be installed:

- Internet Information Services (IIS)
- Microsoft .NET Framework

To find a complete list of system requirements across all the Signature modules, refer to [System Requirements](#)<sup>67</sup>.

## Installing the Registration Software

If you already have the Signature Product Registration Application installed (prior to the 2016 release), you must uninstall before installing the current version. Refer to the Readme to ensure compatibility of the registration application.

 You only need to install and enable registration keys on your server machine(s). This process does NOT need to be performed on client machines.

1. Launch the file **Signature Registration xxxx.exe**. On the Welcome screen, choose *Next* >.

<sup>6</sup> <https://wennsoft.atlassian.net/wiki/spaces/Signature2018R4/pages/7348578/System+Requirements>

<sup>7</sup> <https://wennsoft.atlassian.net/wiki/spaces/Signature2018R4/pages/7348578/System+Requirements>



2. Accept the terms of the license agreement, and choose *Next* >.
3. Accept the default installation location, or use the *Browse...* button to find the folder where you want the Product Registration application to be installed. Choose *Next* >.
4. When you are ready to begin the installation, choose *Install*.
5. When the installation is complete, choose *Finish*.

## Enabling Registration Keys

The first time you open the Signature Product Registration application, the Signature event log folder will be created on the server. To ensure that this folder is created successfully, this application must be run with administrator privileges the first time.

1. Choose *Start* > *Signature* > *Signature.Registration.Entry*. If you are opening this application for the first time, right-click and choose *Run as administrator*. The Registration Key Entry window opens.
2. Enter the **User ID** and **Password** for the "sa" user.
3. Use the drop-down menu to select the **SQL Server Instance** and **System Database** where Signature is installed.
4. Enter a **Runtime Password** for the registration user.
5. Enter the **Server Name**, and use the drop-down menu to select the **Virtual Directory** where the WSRegistration Web service is located.
6. Locate your registration key (.TXT) file that contains your registration information.
7. Choose *Register*. You receive a notification message when the registration key is validated. Choose *OK*. When you log into Microsoft Dynamics GP, make sure to test all the Signature menus to make sure you have proper access. If, when you log in, your Signature menus are disabled, contact WennSoft Sales to obtain a new registration key file.


## About Registration Key Tables

The Signature Product Registration Application creates two tables in the system database.

- **WSRegKey**  
Created when the product is registered (using the Registration Key Setup application).
- **WSRegistrationSettings**  
Created upon initial installation and contains the location of the WSRegistration web service.

## Technical Notes and Troubleshooting

This section contains technical notes and tips for troubleshooting the Signature Product Registration Application.

 Any procedures covered in this section should be performed **ONLY** by authorized technical personnel, such as IT or WennSoft Consulting.

- [Technical notes \(page 10\)](#)
  - [About registration key tables \(page 10\)](#)
  - [About WS SQL database users \(page 10\)](#)
- [Troubleshooting \(page 10\)](#)
  - [Viewing errors in the Web Service Event Viewer \(page 10\)](#)
  - [Is the SignatureRegistration web service installed and working correctly? \(page 10\)](#)
  - [Are the registration keys registered? \(page 11\)](#)
  - [Does the web service location match IIS? \(page 11\)](#)

## Technical notes

### About registration key tables

The Signature Product Registration Application creates two tables in the system database.

- **WSRegKey**  
Created when the product is registered (using the Registration Key Setup application).
- **WSRegistrationSettings**  
Created upon initial installation and contains the location of the WSRegistration web service.

### About WS SQL database users

Signature uses three SQL database users in a system capacity for Service Management and Job Cost.

- **WSRegUser\$Dynamics**  
Created when enabling the registration keys. For more information, see [Enabling registration keys](#)<sup>8</sup>.
- **WSMPUser\$Dynamics**  
Created by Signature during the software installation. This SQL user is used internally for MapPoint integration.
- **WSMiscUser\$Dynamics**  
Created by Signature during the software installation. This SQL user is used internally for document attachments to the SQL database.

## Troubleshooting

### Viewing errors in the Web Service Event Viewer

Any errors relating to the Signature Product Registration Web Service appear in the Internet Information Services (IIS) Event Viewer. To access the Event Viewer.

1. Choose *Start > Control Panel > Administrative Tools > Event Viewer*.
2. Choose *Signature*.

### Is the SignatureRegistration web service installed and working correctly?

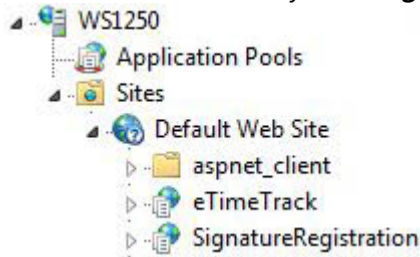
After installing and enabling the registration key application, if you receive any errors relating to web services when logging into Microsoft Dynamics GP, follow the steps below to troubleshoot the problem.

1. Choose *Start > Control Panel > Administrative Tools > Internet Information Services (IIS)*.
2. Expand the server, then **Web Sites**, then **Default Web Site**.

---

<sup>8</sup> <https://docs.key2act.io/display/Signature2018R4/Enabling+registration+keys0>

3. Locate the virtual directory called **SignatureRegistration**, as shown below.



4. Right-click **SignatureRegistration** and choose *Properties*.
5. Select the **Virtual Directory** tab, then choose *Configuration*.
6. Under Application Mappings, you should see 30 or more .DLL files listed, most referencing the string "2.0.50727."  
If there are several fewer than this, you need to run the following command from a DOS window:
  - a. Choose *Start > Run*, then type "cmd" and choose *Open* to open a DOS command window.
  - b. Use the "cd" command to switch to the following folder:  
C:\windows\microsoft.net\framework\v2.0.50727
  - c. Run the "aspnet\_regiis -i" command.
7. When finished, open IIS again and verify that the additional .DLL files are present with the correct .NET version.

## Are the registration keys registered?

To verify that registration keys are registered, you can query the WSRegKey table:

	SuiteID	EncryptedKey	ModifiedUser	ModifiedDate
▶	19	G2nr+63GR8gu...	sa	9/17/2007 2:27:57 PM
*	NULL	NULL	NULL	NULL

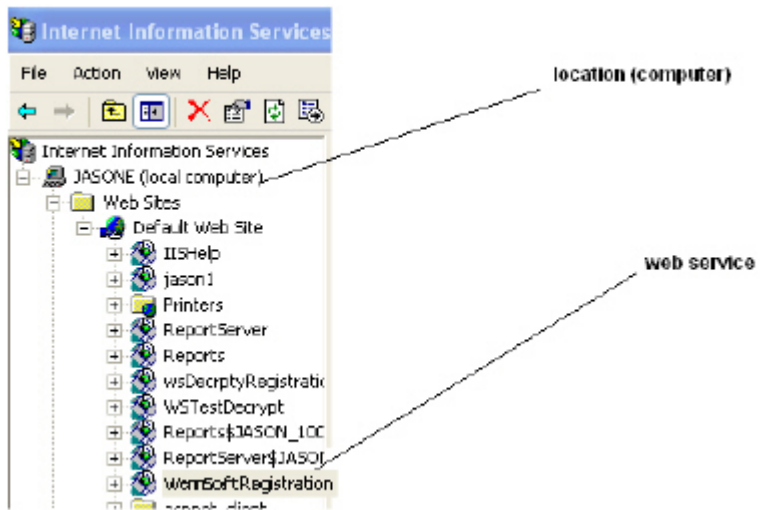
- **SuiteID**  
The suite the key belongs to. There can be many records in this table, but only one per SuiteID.
- **EncryptedKey**  
The actual key that gets decrypted.
- **Modified User**  
The user who is logged in when registering the key.
- **Modified Date**  
The system date when the key gets registered.

## Does the web service location match IIS?

To verify that these match, query the WSRegistrationSettings table in the system database to see the value stored in that table, for example,

JASONE/WSRegistration

Next, go back into IIS and make sure the WSRegistration web service appears under the correct location (in our example, JASONE).



## Contact Information

### Support & Sales

**Support Phone:** 262-317-3800

**Email:** [support@wennsoft.com](mailto:support@wennsoft.com)

**Hours:** Normal support hours are 7:00 a.m. to 6:00 p.m. Central Time. After-hours and weekend support is available for an additional charge. Please contact WennSoft Support for additional information.

WennSoft will be closed in observance of the following holidays: New Year's Day, Memorial Day, Juneteenth, Independence Day, Labor Day, Veteran's Day, Thanksgiving Day, the Day after Thanksgiving, Christmas Day, and the Day after Christmas.

### Support Plans

We're committed to providing the service you need to solve your problems and help your team maximize productivity.

We offer several Signature Enhancement and Support Plans to meet your needs and Extended Support Plans for retired product versions available at <https://www.wennsoft.com/wsportal>.

### Sales

Phone: 262-317-3700

Fax: 262-317-3701

### Address

WennSoft Headquarters  
1970 S. Calhoun Rd.  
New Berlin, WI 53151-1187

Phone: 262-821-4100 or 866-539-2228

Email: [info@wennsoft.com](mailto:info@wennsoft.com)

Website: [www.wennsoft.com](http://www.wennsoft.com)

Office hours: Monday through Friday from 8 a.m. to 5 p.m. Central Time.

---